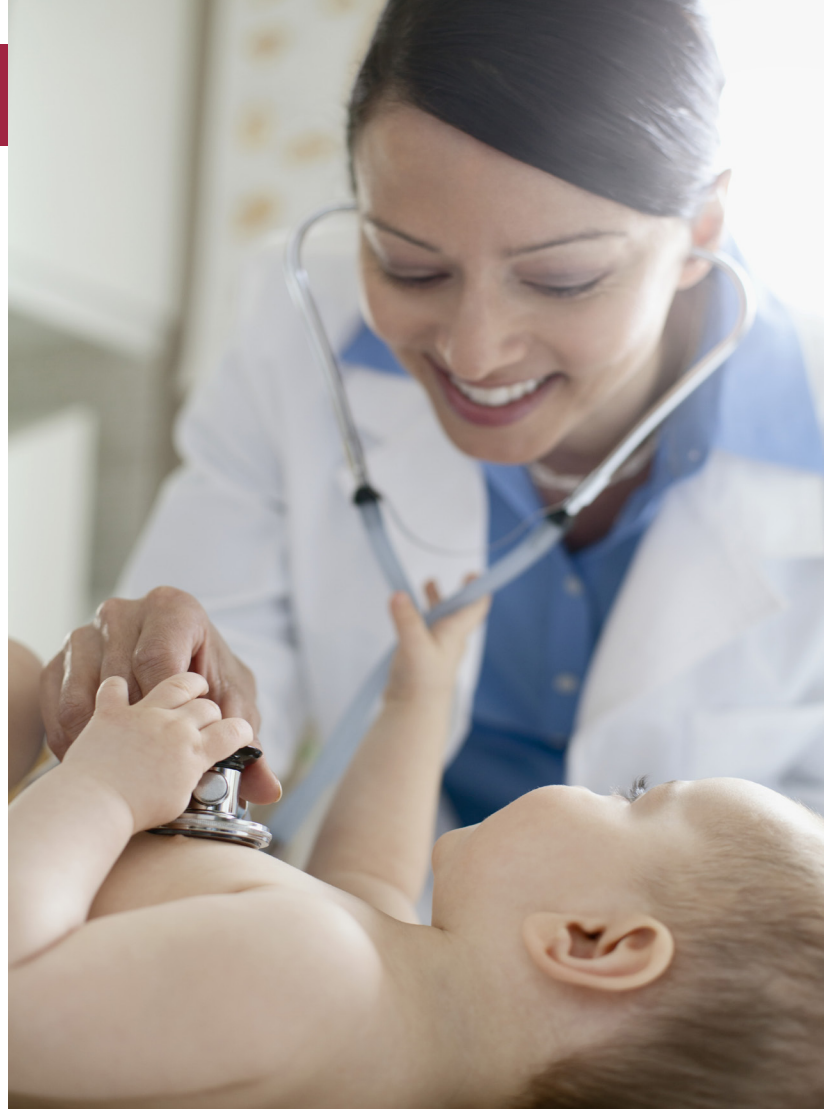


# DIRECTORY

ANTICOAGULATION CLINIC .....	509.546.8367
CARDIOLOGY .....	509.416.8882
COUNSELING / PSYCHIATRY .....	509.943.9104
CRISIS SERVICES .....	800.783.0544
DIAGNOSTIC IMAGING .....	509.546.2225
DIAGNOSTIC IMAGING (WEST PASCO) .....	509.543.7583
EMERGENCY DEPARTMENT .....	509.547.7704
FAMILY MEDICINE .....	509.416.8888
GASTROENTEROLOGY .....	509.416.8885
HOSPITAL OPERATOR .....	509.547.7704
IDEAL PROTEIN .....	509.416.8877
INPATIENT REHABILITATION .....	509.546.2249
24/7 REFERRAL / ADMISSIONS .....	509.542.3024
INTERNAL MEDICINE & PRIMARY CARE .....	509.416.8880
JOINT & SPINE .....	509.542.3761
NEUROLOGY .....	509.544.6176
OCCUPATIONAL HEALTH .....	509.546.2222
OUTPATIENT THERAPY .....	509.546.2306
PEDIATRICS .....	509.546.8399
PHARMACY .....	509.546.8388
PULMONOLOGY / SLEEP MEDICINE .....	509.544.6140
RHEUMATOLOGY .....	509.416.8890
SLEEP LAB .....	509.542.2678
SURGERY - GENERAL & BARIATRIC .....	509.416.8895
SURGERY - GENERAL & BREAST HEALTH .....	509.547.0027
URGENT CARE .....	509.543.9300
WOMEN'S HEALTH .....	509.546.8400

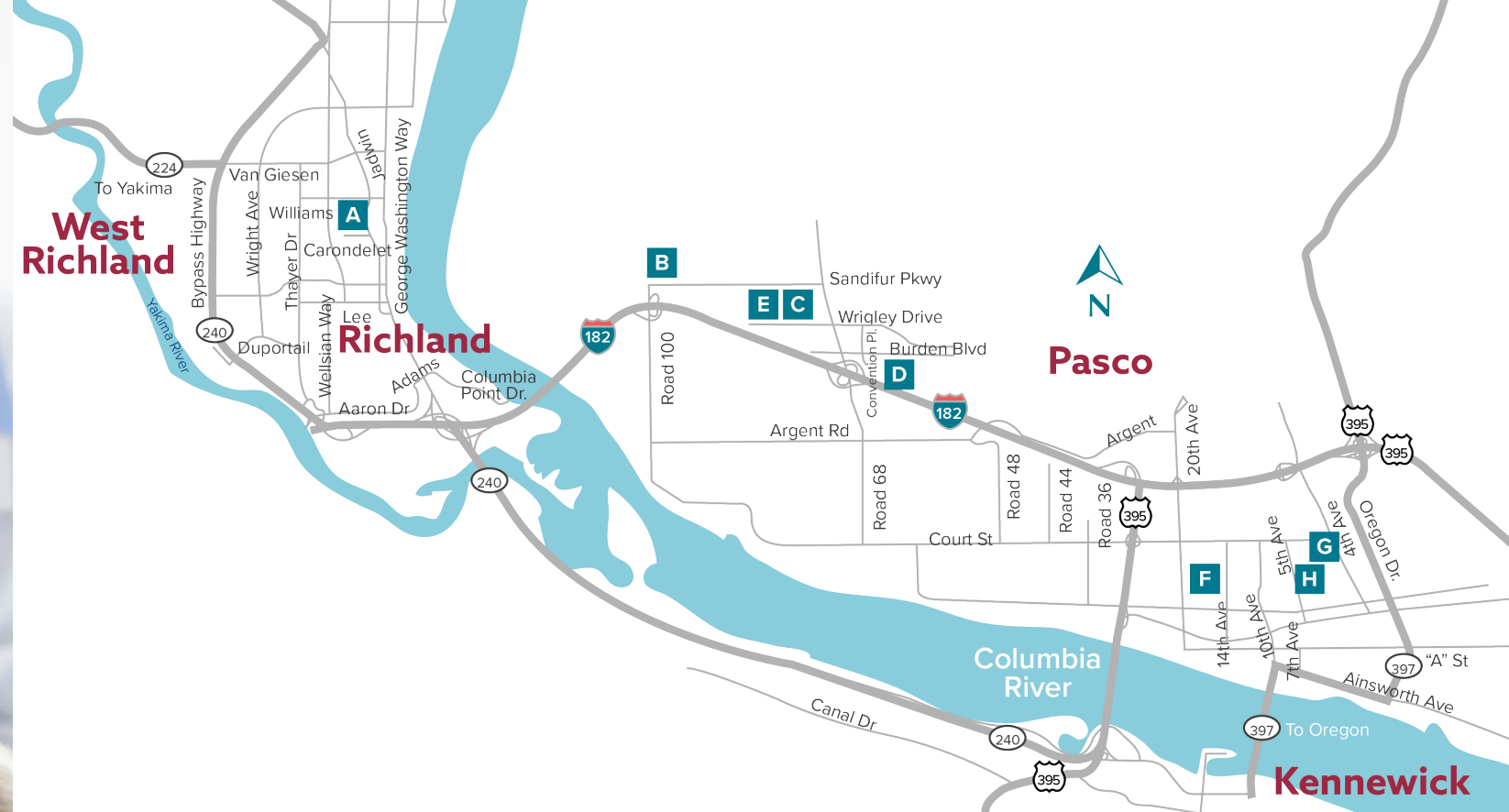


## PHYSICIAN DIRECTORY CLINIC MAP



Updated December 2021

PERSONAL | TRUSTED | CARE



**A** **LOURDES COUNSELING CENTER**  
1175 Carondelet Dr., Richland | 509.943.9104  
**CRISIS SERVICES**  
800.783.0544  
Open 24/7

**B** **LOURDES AT BROADMOOR**  
9915 Sandifur Parkway, Pasco  
**OCCUPATIONAL HEALTH**  
509.546.2222  
**OUTPATIENT THERAPY**  
509.546.2306

**C** **LOURDES URGENT CARE**  
5304 N. Road 68, Pasco | 509.543.9300

**D** **LOURDES HEALTH & WELLNESS CENTER**  
4215 Convention Pl., Pasco  
**IDEAL PROTEIN**  
509.416.8877  
**OUTPATIENT THERAPY**  
509.546.2306  
Physical, occupational & speech therapy

**E** **LOURDES WEST PASCO**  
7425 Wrigley Dr., Pasco (behind Urgent Care)  
**ANTICOAGULATION CLINIC**  
509.546.8367  
Located in the LWP Pharmacy  
**DIAGNOSTIC IMAGING**  
Suite 102 | 509.543.7583  
**FAMILY MEDICINE**  
Suite 100 | 509.416.8888  
**GASTROENTEROLOGY**  
Suite 204 | 509.416.8885  
**GENERAL SURGERY & BREAST HEALTH CENTER**  
Suite 204 | 509.547.0027  
**PEDIATRICS**  
Suite 101 | 509.546.8399  
**PHARMACY**  
509.546.8388  
Open to the public with walk-out service  
**WOMEN'S HEALTH**  
Suite 206 | 509.546.8400

**F** **LOURDES 14TH AVE. MEDICAL PLAZA**  
1200 N. 14th Ave., Pasco  
**SURGICAL & BARIATRIC SERVICES**  
Suite 255 | 509.416.8895

**G** **LOURDES HEALTH**  
520 N. 4th Ave., Pasco | 509.547.7704  
**CARDIOLOGY**  
509.416.8882  
**DIAGNOSTIC IMAGING CENTER**  
509.546.2225  
**EMERGENCY DEPARTMENT**  
509.547.7704  
**INPATIENT REHABILITATION UNIT**  
509.546.2249  
24/7 Referrals | 509.542.3024  
**JOINT & SPINE CENTER**  
509.542.3761  
**NEUROLOGY**  
509.544.6176  
**OUTPATIENT THERAPY**  
509.546.2306  
**PULMONARY SERVICES**  
509.544.6140  
**RHEUMATOLOGY**  
509.416.8890  
**SAME-DAY SURGERY CENTER**  
509.546.2339  
**SLEEP LAB**  
509.542.2678

**H** **LOURDES INTERNAL MEDICINE & PRIMARY CARE**  
507 N. 5th Ave., Pasco | 509.416.8880

This facility and its affiliates comply with applicable Federal civil rights laws and does not discriminate on the basis of race, color, national origin, age, disability or sex. ATENCIÓN: si habla español, tiene a su disposición servicio gratuitos de asistencia lingüística. Llame al 1-509-547-7704 (TTY: 1-509-416-2061). 注意:如果您使用繁體中文, 您可以免費獲得語言援助服務。請致電 1-509-547-7704 (TTY: 1-509-416-2061).

FAMILY MEDICINE

509.416.8888

7425 Wrigley Dr., Ste. 100, Pasco



Michael Adling, DO



Chris Brussow, MD



Peresi Kahirimbanyi, MD



Janak Patel, MD



Maria Castillo, ARNP



Eyob Kidane, PA-C



Alyssa Neil, PA-C



Kandice Schultz, ARNP

GASTROENTEROLOGY

509.416.8885

7425 Wrigley Dr., Ste. 204, Pasco



Gary Belcaster, MD

GENERAL SURGERY / ROBOTIC METABOLIC / BARIATRIC

509.547.0027

7425 Wrigley Dr., Ste. 204, Pasco



Philip Karuman, MD

509.416.8895

1200 N. 14th Ave., Ste. 255, Pasco



Wanda M. Good, DO

INTERNAL MEDICINE & PRIMARY CARE

509.416.8880

507 N. 5th Ave., Pasco



Marshall Keith Brown, DO

SERVING THE COMMUNITY WITH A CHRISTIAN SPIRIT FOR OVER 100 YEARS

PERSONAL | TRUSTED | CARE

NEUROLOGY

509.544.6176

520 N. 4th Ave., Pasco



Steven Erlemeier, MD

OCCUPATIONAL HEALTH

509.546.2222

9915 Sandifur Parkway, Pasco



Ronald Fleck, MD



John Strahle, MD



Bruce Deleonard, PA-C



Edwin Lopez, PA-C



Robert Mitchell, PA-C

PSYCHIATRY / COUNSELING

509.943.9104

1175 Carondelet Dr., Richland



Hardildar Gill, MD



Farrukh Hashmi, MD



Benjamin Pe, MD



Michelle Aronow, ARNP



Sarah Severin, DNP-PMHNP, ARNP

PULMONOLOGY

509.544.6140

520 N. 4th Ave., Pasco



Jasdip Matharu, MD

PEDIATRICS

509.546.8399

7425 Wrigley Dr., Ste. 101, Pasco



Paolo Antonio de Vera, MD



Geraldine Dizon, MD



Dianna Lang, MD

RHEUMATOLOGY

509.416.8890

520 N. 4th Ave., Pasco



Sudeep Thapa, MD



Joshua Scoville, ARNP

URGENT CARE

509.543.9300

5304 N. Road 68, Pasco



Kevin Taylor, MD



Carly Beesley, DNP



Michael A. Carney, PA-C



Eric Pearson, PA-C



Caitlyn Uhnak, DNP

WOMEN'S HEALTH

509.546.8400

7425 Wrigley Dr., Ste. 206, Pasco



Ravinder Samra, MD, FACOG



Mary Gallant, ARNP



YourLourdes.com